

STEKO

Some suggestions, on which to base your **IDEAS.**

STEKO – Some suggestions, on which to base your ideas.

STEKO®





Turning **AN** old desire into a **NEW IDEA.**
Turning an old desire into a new idea.

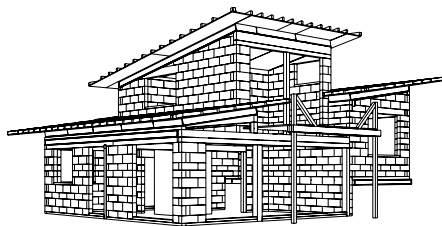
A NEW HOUSE NEEDS A NEW WAY OF THINKING.



More and more, people are looking to build and live in different ways. They want good, solid houses with a high standard of living and reasonable production and maintenance costs. However, they also want to build a way that does not adversely affect their quality of life or that of the generations to come – i.e. conservatively and sustainably. These new houses have a future: renewable resources are combined with the latest technologies, whilst bearing in mind both economy and ecology.



STEKO shows how construction can be different and better: simpler, more cost-effective, sounder, more environmentally-friendly – all this combined with the highest quality. STEKO is a modular construction system that uses the latest building techniques, allows sustainable construction, thereby meeting the most stringent requirements in terms of stability, durability, comfort and design freedom. STEKO is a construction system, which opens up new dimensions to architects, planners and construction companies. Now, nothing is as simple as building a solid, sound and ecologically friendly house.



Load-bearing and space-defining wall are erected simply and easily using standardised, industrially manufactured wood modules.



Simplicity is THE basis of many a **GOOD** solution.
Simplicity is the basis of many a good solution.



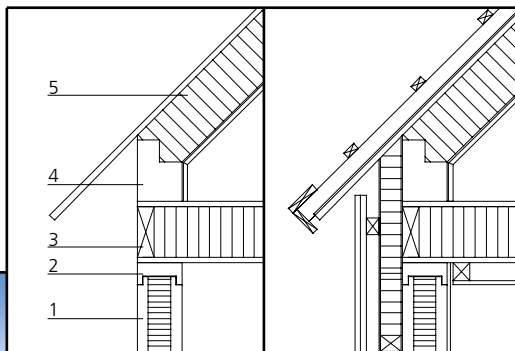
STEKO IS AN AMAZINGLY SIMPLE IDEA.



2

STEKO is a new construction system, which combines the strength of a brick wall with the advantages of a wooden structure. At the core of this innovative wooden construction system are handy modules, which can easily be inserted next to each other and on top of one another. Internal and external walls constructed in this way can both carry loads and create spaces. STEKO modules are available in different heights, lengths and surface quality.

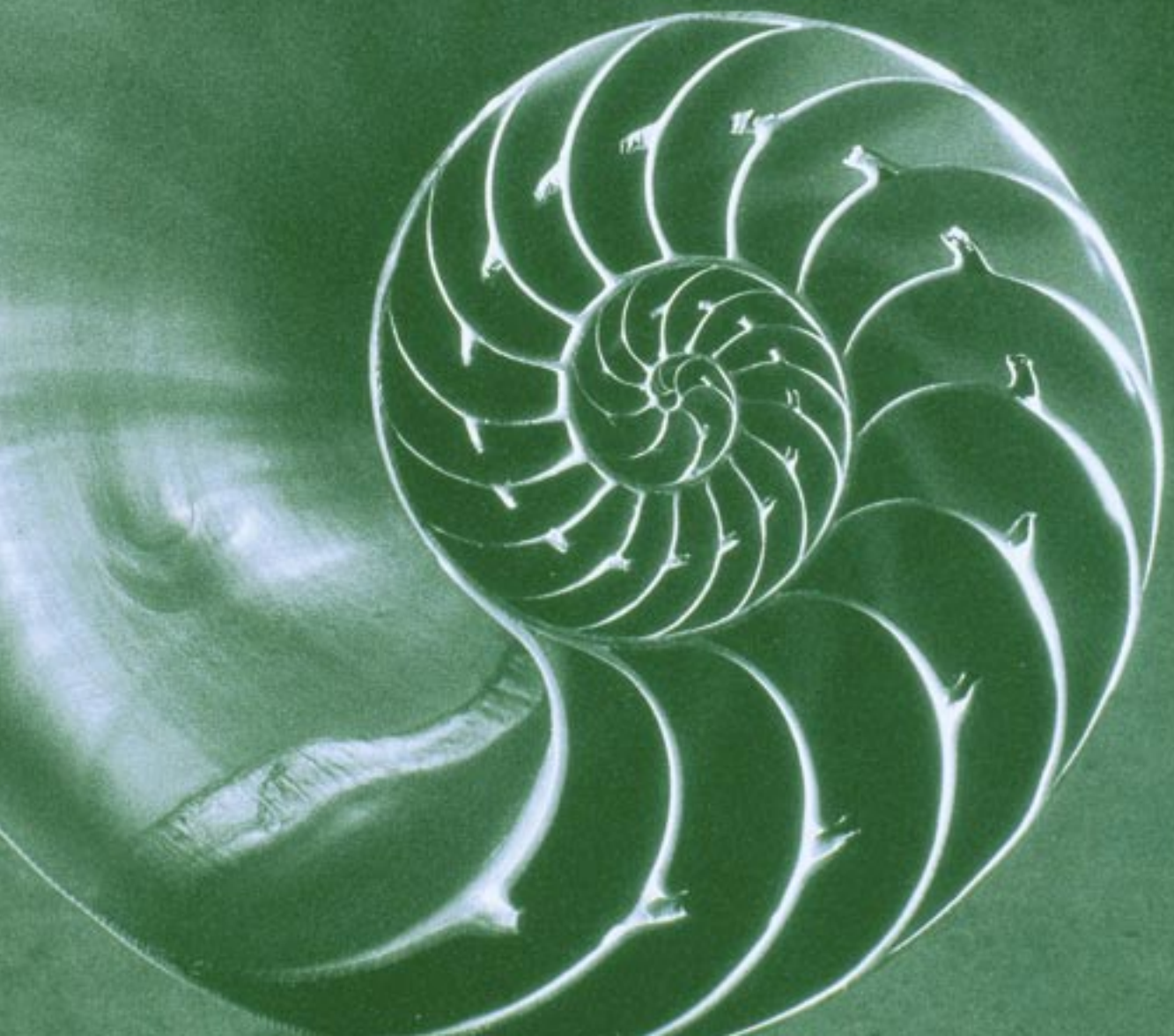
With STEKO, walls can easily accommodate standard windows and doors, as well as combining with the usual flooring and ceiling systems. The combination of the unique STEKO wall construction system with standard additional elements results in a simple, integrated and high quality construction system. In open-plan rooms, STEKO walls can house pipes, cables and insulation materials.



- 1 STEKO wood module
- 2 STEKO connector
- 3 Covering element
- 4 Edging strip
- 5 Ceiling element



The most **important** MODULE is your **CREAtivity.**
The most important module is your creativity.



WITH STEKO, YOU HAVE COMPLETE FREEDOM WHEN DRAWING UP YOUR PLANS.



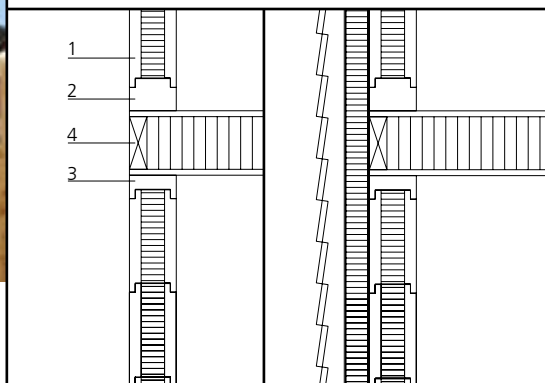
STEKO helps reduce your planning costs and gives free rein to your creative imagination. The CAD-aided planning uses a simple grid, which, thanks to its fine grading – 16 cm horizontally and 8 cm vertically – allows you more design freedom. In a wall, thanks to the innovative connectors, the modules form a static unit and a massive, stable whole. STEKO allows planners and home-owners complete freedom, when they come to design the interior spaces and the outer skin of the house. Inside, the walls can be left visible or can be covered with the usual materials, plaster or derived timber products. The outer façades can be constructed using cladding material ventilated at the rear or compact plaster systems. In the planning and construction stages, STEKO saves you time and money. Since there are fewer steps, there are fewer interfaces, thus shortening the planning and execution processes.

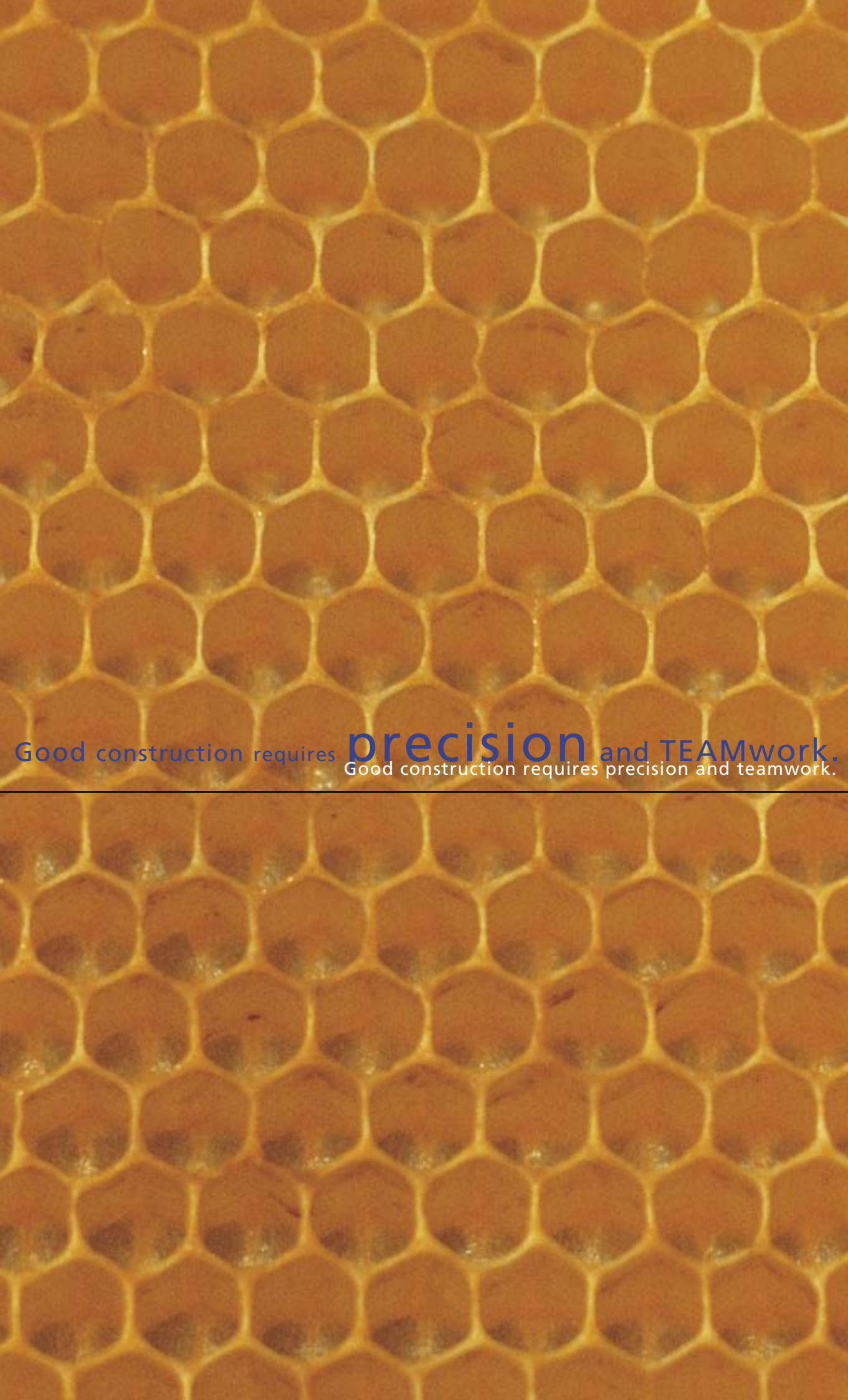


The STEKO construction system is suitable for houses, as well as public, industrial, commercial and office buildings. The wooden modules are also ideal for temporary buildings, trade fairs and stages, renovations, extensions, dividing spaces or filling in skeleton constructions.



1 STEKO wooden module; 2 STEKO beam
3 STEKO connector; 4 covering element





Good construction requires **precision** and **TEAMwork**.
Good construction requires precision and teamwork.

STEKO ENSURES THAT BUILDING IS MORE EFFICIENT.

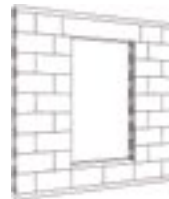
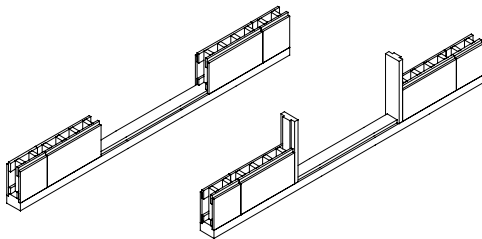
The modules and additional elements are delivered pre-packaged on pallets. Since the beams are then assembled on the base, the STEKO modules can be erected quickly and easily, without the need for expensive tools, with one element placed on top of another. A solid house can be built in two or three days, without mortar, cement or lime. The covering elements are integrated into the construction using STEKO connectors.

The electricity cables can be installed whilst the walls are being erected, or even afterwards. At the same time, you can start to fit the doors and windows. These are inserted into the STEKO walls using prepared system parts, which are of a durable thickness.

4



Some people still maintain that individual houses cannot be constructed using industrial, prefabricated materials. STEKO contradicts this train of thought and proves how the cost and logistic benefits of industrial production can also be used to build individual and creative houses. STEKO modules are mass-produced, can be ordered from the warehouse and, then, simply transported and assembled. Although STEKO uses industrial processes, planners and architects have complete design freedom.



Windows and doors are easily fitted into STEKO walls. Finishing elements are available for these openings.



Good **IDEAS** are a **BREATH** of fresh air.
Good Ideas are a breath of fresh air.

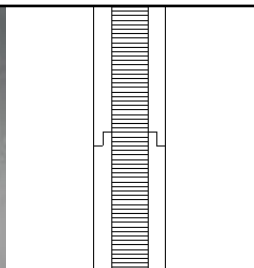
STEKO CREATES A HEALTHY LOVING CLIMATE.



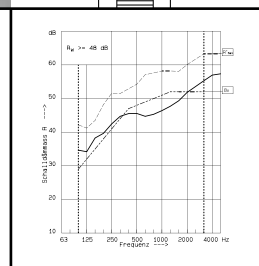
5

Walls constructed using STEKO are like a second skin. Thanks to the large proportion of solid, dry wood and natural insulators, they allow a house to breathe and disperse various elements. Compared to conventional houses, STEKO walls need neither moisture barriers nor sealing bands or barrier sheets and, consequently, maintain the natural climate balance both in summer and winter. Temperature and moisture are regulated by the porous and cells of the solid wood – just like a person's skin. In winter, the solid STEKO wall stores up the warmth and, in summer, it keeps internal rooms comfortably cool. Together with the excellent insulation

characteristics, this ensures a uniquely comfortable and healthy living environment. The walls feel pleasantly warm and the atmosphere snug – without any unpleasant moisture that often lingers for years after a house is built. The STEKO modules are made only from solid wood and the STEKO wall system is designed in such a way that No wood preservatives are required – which is also a significant contribution to the well-being of those living in the house.



Steko was developed in university and college laboratories and tested extensively in the areas of static, durability, thermal insulation and protection against sound and moisture.





Building in the **FUTURE** without **stone.**
Building in the future without stone.

STEKO IS AN INVESTMENT IN THE ENVIRONMENT.

STEKO modules are made from solid wood, sourced from trees that grow in sustainable forests. Wood is a unique substance that produces oxygen, whilst it is growing, and also stores CO₂, thereby making a valuable contribution to reducing greenhouse gases emitted into the atmosphere. Furthermore, wood is the building material that uses up the least energy, both when the building is being constructed and whilst it is being used; using the STEKO construction system ensures that your maintenance and additional costs will be lower and, last but not least, STEKO modules made from solid wood can easily be exchanged at any time.

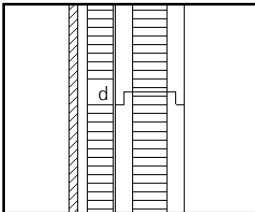
STEKO walls have excellent insulation qualities even when used in the construction of shells. The insulation on the external walls once again improves heat retention and makes the STEKO system eminently suitable for the construction of minimum, low and passive energy houses.

6

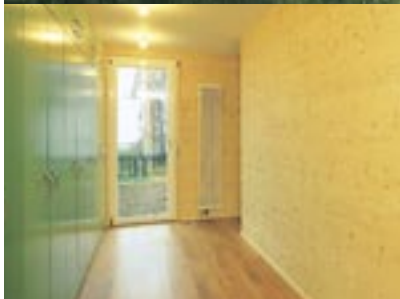


The outstanding heat insulation characteristics are the result of intensive and systematic development work in the test lab and in real-life building situations.

(d = thickness of the external insulation)



d	U-Wert
40 mm	0,31 W/m ² K
60 mm	0,27 W/m ² K
80 mm	0,25 W/m ² K
100 mm	0,23 W/m ² K
120 mm	0,21 W/m ² K
140 mm	0,19 W/m ² K
160 mm	0,18 W/m ² K



A bumblebee with black, yellow, and white stripes is flying in the upper right quadrant of the image. Below it, a large, vibrant red flower with numerous water droplets on its petals is the central focus. The flower's stem, covered in small thorns, extends from the bottom left towards the center. The background is a solid, bright green color.

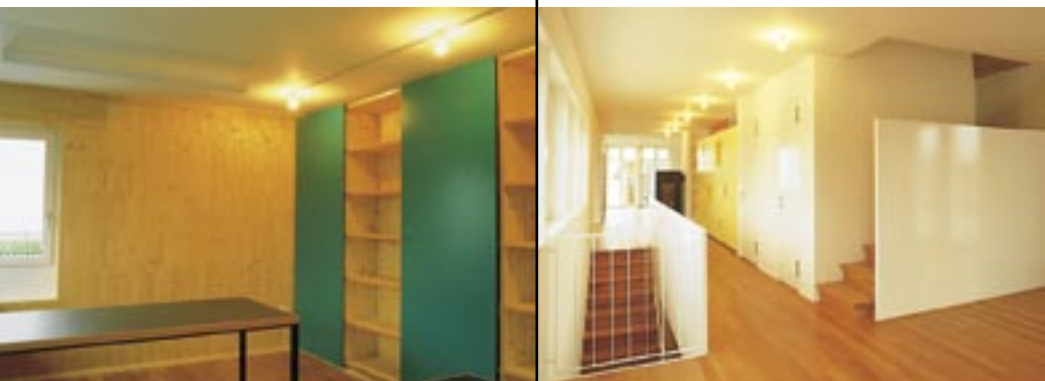
WE put all our **HEADS** together.
We put all our heads together.

WE DISCUSS YOUR IDEAS WITH YOU!



We like to answer your questions regarding planning, use and construction, sales, delivery times and assembly individually. Naturally, we will also send you detailed documents on construction and building-related topics.

Please do not hesitate to contact our engineers for further information regarding the STEKO construction system or to set up an appointment with us. Our sales and application partners are always ready to help you at any time.





STEKO®

Your STEKO partner:

STEKO Holz-Bausysteme AG
Dorf 21
CH - 5056 Attelwil
Switzerland

Tel +41 (0)62 738 50 80
Fax +41 (0)62 738 50 89
Mail info@steko.ch
www.steko.ch